

Ptec Controls and Signals

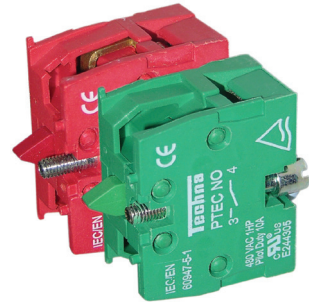
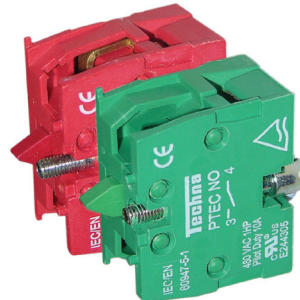


This range of 22.5mm diameter Push Buttons, Selector Switches and Pilot Lights, available in either corrosion resistant plastic or metallic designs, have been designed to provide the following features:

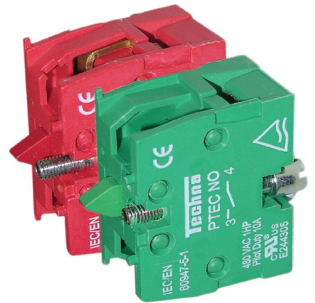
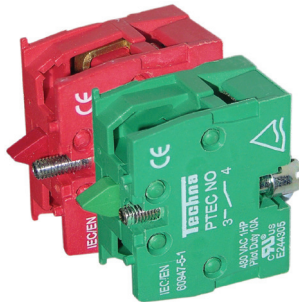
- Compact design
- Safe in operation with shrouded terminals
- Easy and rapid installation
- Fixing method unaffected by excessive vibration
- Heavy duty construction
- Manufactured from flame resistant materials
- Use of LEDs for long life and minimum maintenance
- Available with plastic bush construction for increased durability and longer mechanical life or traditional metal
- Plastic bush construction resistant to corrosion.

Non-Illuminated

Up to six switch contacts can be installed.



PtecMet



Actuators

The circular actuators have flame and corrosion resistant plastic bezels, and fit all of the different types of contact elements.

Contact Elements

The contact elements are interchangeable and can be stacked without additional hardware. 1 to 6 elements (NO or NC) can be used.

Terminals

Contact elements and LED lights are designed to have shrouded terminals with combi screws.

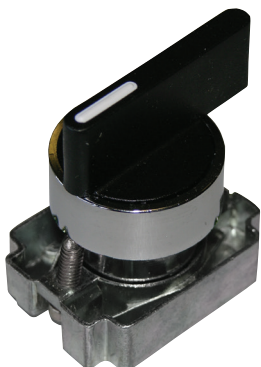
Mounting

The 22.5mm Ø control devices can be fixed in any position on panels of 1 to 6mm thickness. We recommend minimum fixing centres of 30mm x 40mm. However, the dimensions and configuration should be decided according to the application. The actuators lock on to the holding bracket using a snap on type of fixing which enables a simple and fast assembly.

Ptec Technical Specification

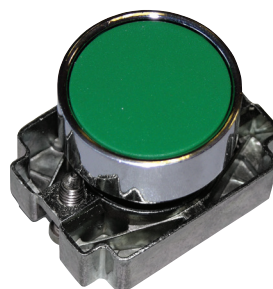
Environment										
Standards Compliance	IEC/EN 60947-5-1 & UL 508									
Flammability Rating	UL 94 V-0									
Ambient Temperature	-25°C to 70°C									
Operating Position	All positions									
Contact Block										
Rated Insulation Voltage	500V									
Rated Thermal Current	10A									
Contact Operation	Normally open or normally closed									
Making and Breaking Capacity	AC 15 4A, 415V AC / DC 13 0.5A, 100V DC									
Terminal Capacity	Minimum 1 x 0.5mm ² , maximum 2 x 1.5mm ² or 1 x 2.5mm ²									
Terminal Marking	1-2 for normally closed, 3-4 for normally open									
Short Circuit Protection	10A, HRC type, cartridge fuse, rated for resistive loading									
Mechanical Life	Over one million operations									
Electrical Rating (1 Million Operating Cycles)	<table style="display: inline-table; border: none;"> <tr> <td style="padding-right: 10px;">AC 15</td> <td style="padding-right: 10px;">$\frac{V}{A}$</td> <td style="padding-right: 10px;">$\frac{24}{4}$</td> <td style="padding-right: 10px;">$\frac{120}{3}$</td> <td style="padding-right: 10px;">$\frac{230}{2}$</td> <td style="padding-right: 20px;">DC 13</td> <td style="padding-right: 10px;">$\frac{V}{A}$</td> <td style="padding-right: 10px;">$\frac{24}{0.5}$</td> <td style="padding-right: 10px;">$\frac{110}{0.2}$</td> </tr> </table>	AC 15	$\frac{V}{A}$	$\frac{24}{4}$	$\frac{120}{3}$	$\frac{230}{2}$	DC 13	$\frac{V}{A}$	$\frac{24}{0.5}$	$\frac{110}{0.2}$
AC 15	$\frac{V}{A}$	$\frac{24}{4}$	$\frac{120}{3}$	$\frac{230}{2}$	DC 13	$\frac{V}{A}$	$\frac{24}{0.5}$	$\frac{110}{0.2}$		

NOTE: Make and break capacity as per IEC 947-5-(1) 1990. Electrical rating is for 1 million operating cycles, at 3600 cycles per hour, with a load factor of 0.5.



Plastic or Metallic

Techna's range of Ptec Controls and Signals are now available in either plastic or metallic housings depending on your requirements.



Techna PUSH BUTTONS AND INDICATORS



Non-Illuminated Flush Momentary		
Description	Plastic Design	Metal Design
Pushbutton Non-Illuminated, Flush, White with Collar	PtecPNWhite	PtecMetPNWhite
Pushbutton Non-Illuminated, Flush, Black with Collar	PtecPNBlack	PtecMetPNBlack
Pushbutton Non-Illuminated, Flush, Green with Collar	PtecPNGreen	PtecMetPNGreen
Pushbutton Non-Illuminated, Flush, Red with Collar	PtecPNRed	PtecMetPNRed
Pushbutton Non-Illuminated, Flush, Blue with Collar	PtecPNBlue	PtecMetPNBlue
Pushbutton Non-Illuminated, Flush, Yellow with Collar	PtecPNYellow	PtecMetPNYellow



Mushroom		
Description	Plastic Design	Metal Design
Non-Illuminated, 40mm Twist to Release, Red with Collar	PtecMushT40	PtecMetMushT40
Non-Illuminated, 60mm Twist to Release, Red with Collar	PtecMushT60	PtecMetMushT60
Non-Illuminated, 40mm Key Release, Red with Collar	PtecMushK40	PtecMetMushK40
Non-Illuminated, 30mm Twist to Release, Red, Slanted Back with Collar	PtecMushT30	PtecMetMushT30



Selector Switch					
Description		Plastic Design		Metallic Design	
		Standard	Extended	Standard	Extended
Selector Switch Non-Illuminated, Two Position, Constant with Collar		PtecSN2F	PtecSE2F	PtecMetSN2F	PtecMetSE2F
Selector Switch Non-Illuminated, Three Position, Constant with Collar		PtecSN3F	PtecSE3F	PtecMetSN3F	PtecMetSE3F
Selector Switch Non-Illuminated, Two Position, Momentary with Collar		PtecSN2M	PtecSE2M	PtecMetSN2M	PtecMetSE2M
Selector Switch non-Illuminated, Three Position, Momentary with Collar		PtecSN3M	PtecSE3M	PtecMetSN3M	PtecMetSE3M



Key Selector			
Description		Plastic Design	Metal Design
Keyswitch, Two Position, Constant, Key Removable Both Positions		PtecK2CRA	PtecMetK2CRA
Keyswitch, Two Position, Constant, Key Removable Left Position		PtecK2CRL	PtecMetK2CRL
Keyswitch, Three Position, Constant, Key Removable Centre with Collar		PtecK3CRC	PtecMetK3CRC
Keyswitch, Three Position, Momentary, Key Removable Centre with Collar		PtecK3MRC	PtecMetK3MRC

Accessories	Order Code
Set of Two Spare Keys	PtecKeySet

Techna PUSH BUTTONS AND INDICATORS



Contact Blocks	
Description	Order Code
Contact Block, Actuator Mounting, Normally Open, Green	PtecNO
Contact Block, Actuator Mounting, Normally Closed, Red	PtecNC

Legend Plates (all plates are 30mm x 40mm unless otherwise stated)			
Description	Order Code	Description	Order Code
Auto	PtecLPAuto	Reverse	PtecLPReverse
Auto Hand	PtecLPAuto-Hand	Slow	PtecLPSlow
Auto O Hand	PtecLPAuto-O-Hand	Start	PtecLPStart
Blank	PtecLPBlank	Start, Stop	PtecLPStart-Stop
Close	PtecLPClose	Stop	PtecLPStop
Down	PtecLPDown	Up	PtecLPUp
Fast	PtecLPFast	Up, Down	PtecLPUp-Down
Forward	PtecLPForward	Yellow/Black - Emergency Stop (→60mm)	PtecEStopPlate60
Forward, Reverse	PtecLPForward-Reverse	Yellow/Black - Emergency Stop (→90mm)	PtecEStopPlate90
Hand	PtecLPHand	Yellow Protection Ring (→40mm) - Internal Depth = 25mm	PtecEStopRing40
Inch	PtecLPInch	Yellow Protection Ring (→60mm) - Internal Depth = 26.5mm	PtecEStopRing60
Off, On	PtecLPOff-On	I / II	PtecLPI-II
Open	PtecLPOpen	0 / I	PtecLP0-I
Reset	PtecLPReset	I / 0 / II	PtecLPI-0-II



Enclosures	
Description	Order Code
Empty Enclosure for One Actuator	PtecENC1Yellow
Empty Enclosure for Two Actuators	PtecENC2Yellow
Empty Enclosure for Three Actuators	PtecENC3Yellow



Control Stations	
Description	Order Code
40mm Twist to Release Mushroom + 2NC Contact Blocks	PtecCSEST2NC

NOTE: Special combinations of enclosures and control stations are available with special and pre-fitted buttons.